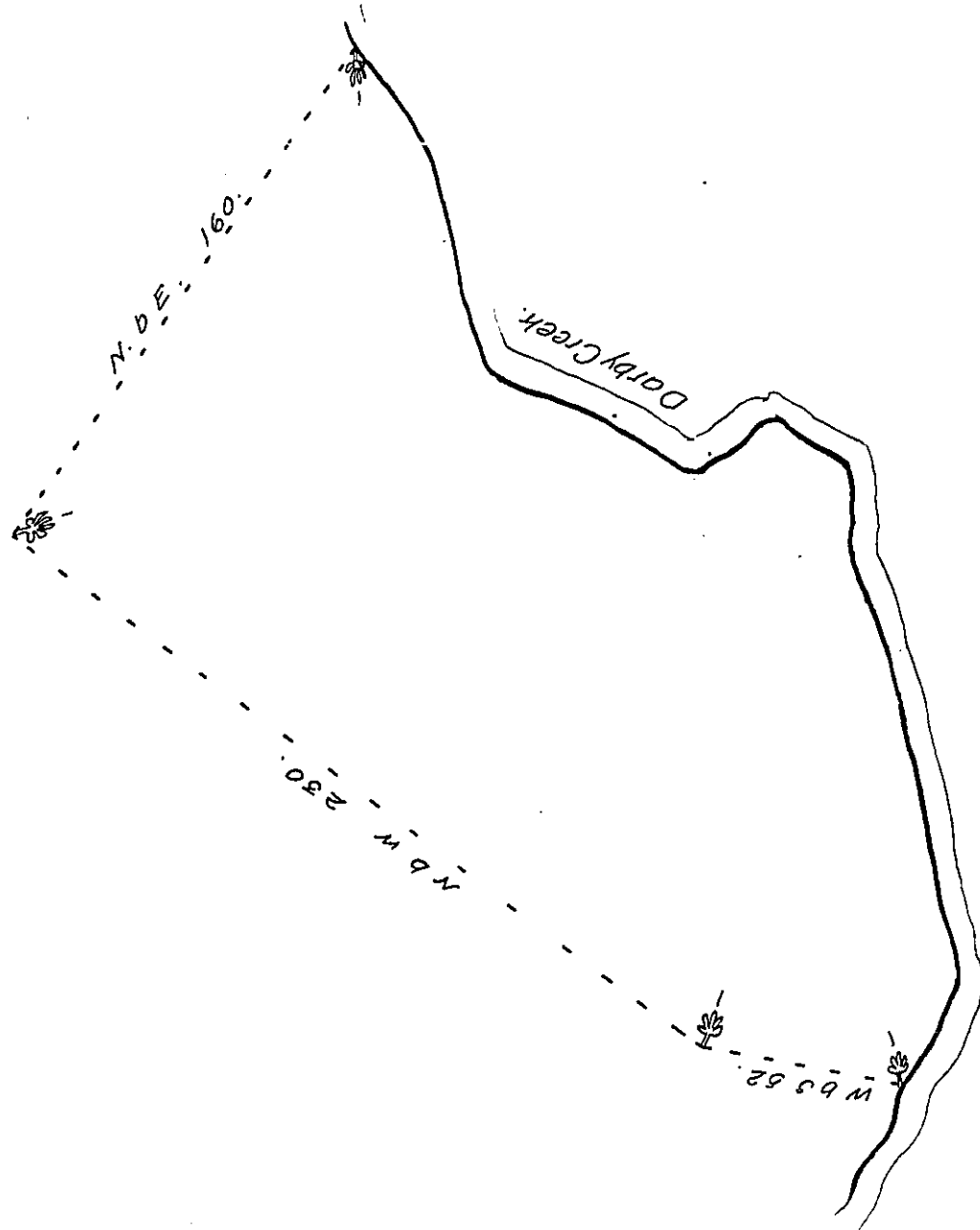


FORM No. 1.



June the 17. 1683.

Then surveyed for Owen Foulk 200 acres of Land lying on the south side of Darby creek beginning at a marked red oak standing by the Creek side and running N. b. S. 52 perches to a white oak being a corner tree of George Simcock's land from thence N. b. N. along the S. d. Simcock's line of marked 230 perches to a marked white oak being another corner tree of the S. d. Simcock's land and from thence N. b. E. <sup>160 perches</sup> along George Meers line of marked trees to a marked post standing by Darby creek and down the Creek on several courses to the first mentioned red oak

by Charles Ashcom.

IN TESTIMONY that the above is a copy of the original remaining on file in the Department of Internal Affairs of Pennsylvania, made conformably to an Act of Assembly approved the 16th day of February, 1833; I have hereunto set my Hand and caused the Seal of said Department to be affixed at Harrisburg, this eleventh day of November, 1909.

*Henry Horck*  
Secretary of Internal Affairs.